



30% Design Community Meeting

Site 130-E-SE-2

March 8th, 2023

Please sign in on your mobile device:
<https://communitymeeting.ocps.net/>



Welcome Message

From District 2 School Board Member

Maria Salamanca



Introductions

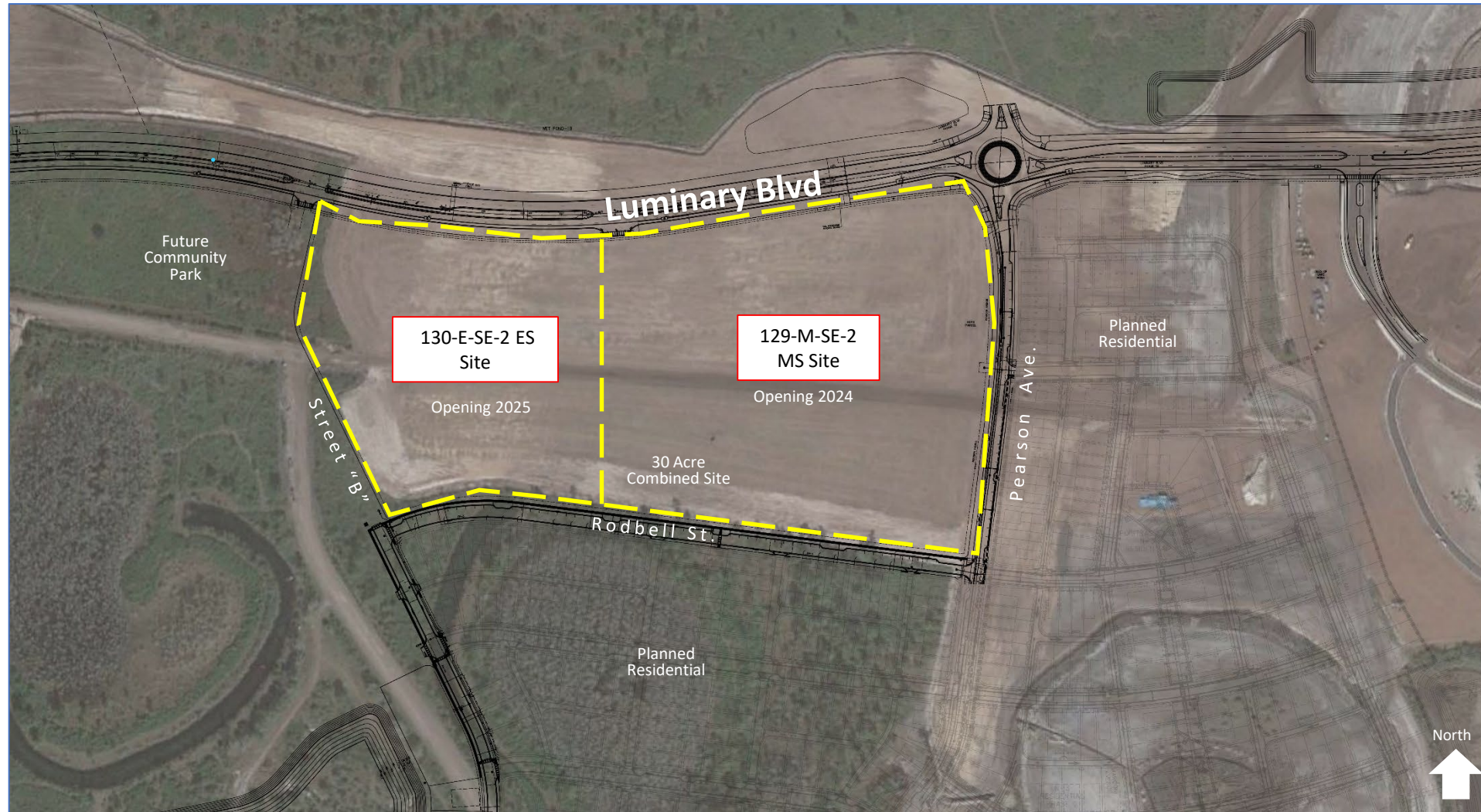
Facilities Director, Construction & Planning
Jessma Lambert



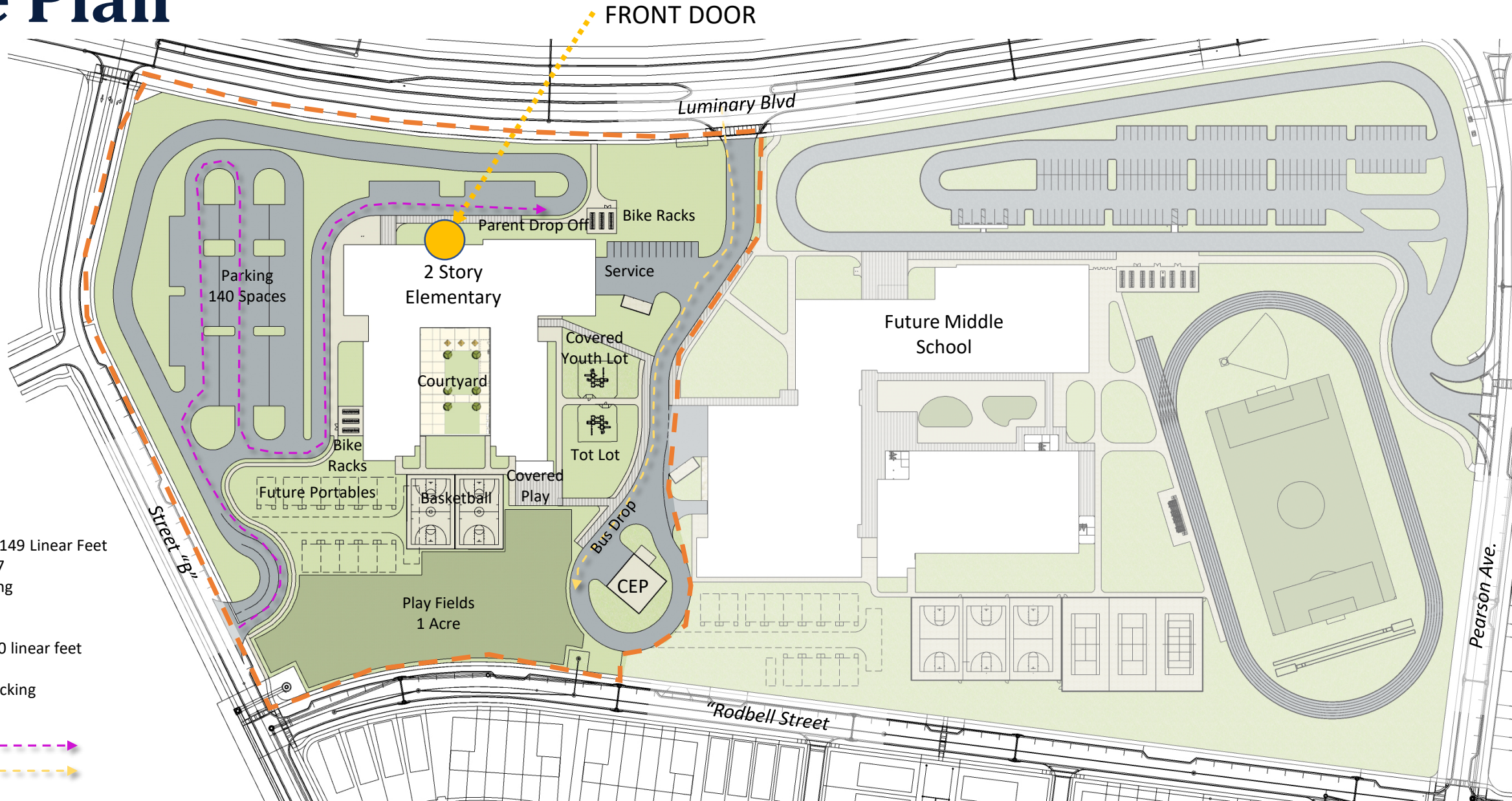
Surrounding Context



Site Aerial Map



Site Plan







Car Stacking
Total Length: 3,149 Linear Feet
 $3,149 / 20 = 157$
157 Cars Stacking

Bus Stacking
Total length: 600 linear feet
 $600 / 40 = 15$
15 Total Bus Stacking

Car Stacking ———▶
Bus Stacking ———▶

The Stats

-  Construction Budget: \$30,000,000
-  837 Student Stations
-  Site Size: 12 Acres
-  Opening 2025

Program Elements

The New Elementary School will be designed with...



Classrooms
“Discovery” STEM Lab
Art Room
Music Room
Cafeteria
Innovative Media Center

Advanced Technology
Sustainable Building Systems
Physical Education Amenities
Car & Bus Loops
Single, secure point of entry

...For all new elementaries 2024 AND beyond

Sustainability

Sustainable Design Criteria



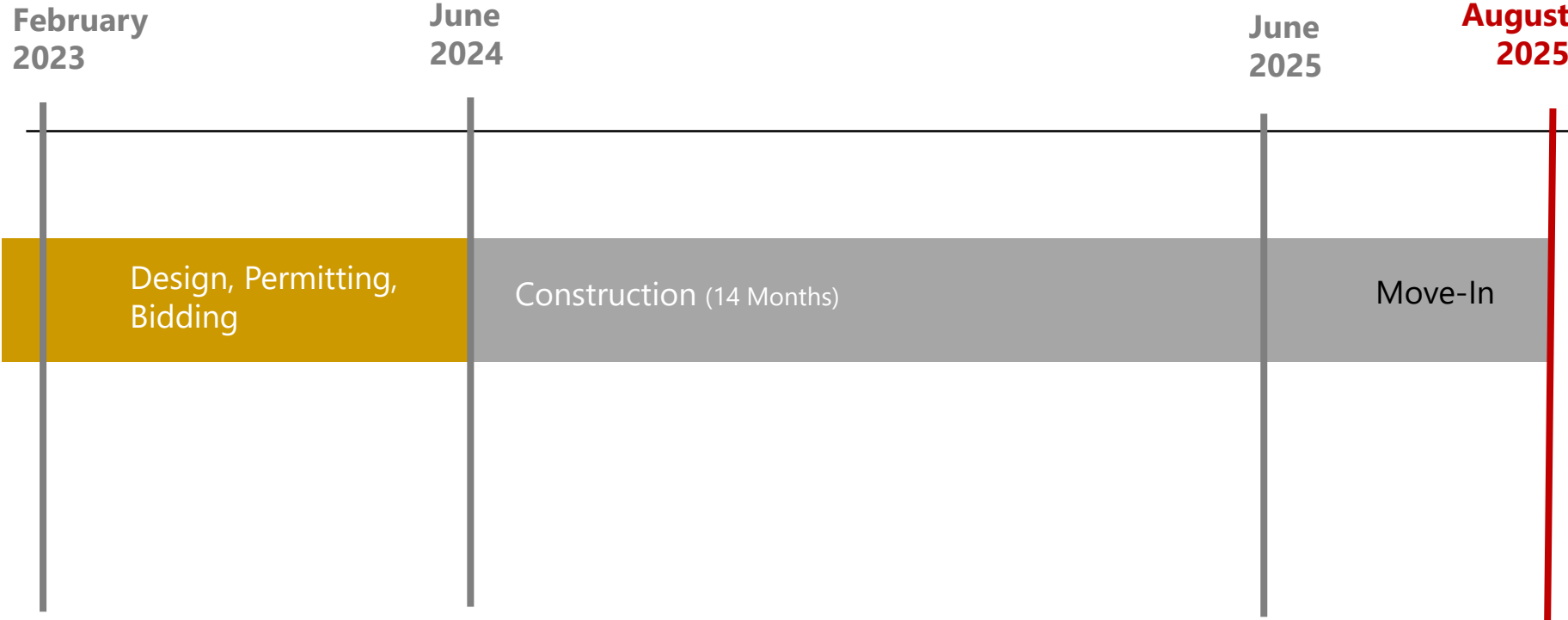
Building

- 10% more energy efficient than ASHRAE 90.1 standard
- High Efficiency Chillers (15% energy reduction)
- Light colored roof to reduce heat gain and improves energy performance
- Energy Efficient LED Lighting
- Energy Star rated equipment
- Water saving toilets, faucets, and fixtures
- All classrooms have daylighting
- Over 75% of ALL spaces have daylighting
- Thermal efficient windows/glazing

Site

- Native/low water plants – reduce water consumption
- Low Impact Design (LID) stormwater design

Schedule



Thought Exchange

Thought Exchange

- OCPS is using a new tool called ThoughtExchange to gather input from students and staff and school community.
- Students and staff at WPHS were asked to answer one open-ended question with as many responses, and then moved onto the Rate Thoughts step.
- In the Rate step, they saw their responses and those shared by others and assigned 1 to 5 stars to each idea depending on how strongly they agreed or disagreed with it.

ThoughtExchange includes three steps:

1. **Share**: Respond to the question, independently and anonymously
2. **Star**: Consider thoughts shared and rate them on a five-star scale.
3. **Discover**: Learn what matters to the group by exploring thoughts and ratings.

Exchange Summary

Question:

Considering our plan for the new school, what is one thing about our plan that should be changed as we proceed with the design

Questions & Answers

We want to hear from you.

Click here to give us your thoughts regarding your new school.

<https://tejoin.com/scroll/136325831>

This Community Meeting Presentation is posted
at facilities.ocps.net and on the School Board Member's page.

Our Promise. Your Support. Their Success.

Our Promise. Your Support. Their Success.

Our Promise. Your Support. Their Success.

Thank You



**Orange County
Public Schools**